

Health Career Display



- Purpose:** To encourage Health Science students to improve their ability to present themselves and communicate career information to others.
- Description:** Teams consisting of two (2) competitors shall develop a visual display of a specific career or cluster of careers in healthcare. The display allows the students to express ideas through an artistic medium to highlight the benefits of a particular career focus. The students will also be judged on their ability to present themselves and communicate the career information to others.
- Dress Code:** Competitors must be in official HOSA uniform or in proper business attire. Bonus points will be awarded for [proper dress](#). Both team members must be properly dressed to receive bonus points.
- Rules and Procedures**
1. Competitors in this event must be active members of HOSA-Future Health Professionals, in good standing in the category in which they are registered to compete (Secondary or Postsecondary/Collegiate).
 2. Competitors must be familiar with and adhere to the "[General Rules and Regulations of the National HOSA Competitive Events Program](#) (GRR)."
 3. The display must be presented by a team of two. One healthcare career or a cluster of related health careers may be presented.

THE HEALTH DISPLAY

The display is as integral part of the event presentation, but can also stand alone as an effective illustration of the chosen career or career cluster. All displays will have a consistent framework, and teams will be judged on how effectively the display informs about the career or career cluster, AND supports the verbal presentation.

4. The work **must** be the work of the competitors, including the artistic aspects of the display. Allowable artwork may include:
 - Competitor produced illustrations, designs, and/or computer-generated graphics.
 - Clip art or other graphics used in compliance with copyright laws.
 - Photographs used in compliance with copyright laws.
 - Computer or machine generated lettering.
5. The display uses a single wall tri-fold presentation display board that is 48" x 36" unfolded, in any color, made of foam or corrugated. (*See the Changes for 2013-14 box in these guidelines for more information.*)
6. The table-top display must be able to stand on a standard conference table furnished on site. If 8 ft. tables or banquet rounds are used, there will be two displays per table. Presentation display boards that are 48" x 36" are REQUIRED. In addition to the presentation board, the display may include models, mannequins, pamphlets, brochures, or any other method or combination of physical objects or props to display the project. Computers and electronics may NOT be used.

7. DISPLAY MEASUREMENTS:

Once positioned on the table with three-dimensional display items, the maximum dimensions are:

HEIGHT: 36 inches WIDTH: 48inches DEPTH: 24 inches

The display will be measured by the Section Leader or Event Manager before judging begins, from a beginning point to the furthest point of the display.

- Height will be measured from the table top to the highest point of anything on the display, and must not exceed 3 feet.
- Width will be measured from the widest point of anything on the display to the opposite point.
- Depth will be measured from the widest point of anything on the display to the opposite point.
- Nothing may overlap the sides of the display table, with the exception of the table drape.
- Dimensions include models, mannequins and all other display items.
- Information or display items outside the dimensions will be considered part of the display and subject to point deductions.

8. The competitor is responsible for the safety and proper functioning of all equipment they bring to this event. The competitor *may not* use any flames, body fluids, living organisms, syringes, or potentially hazardous equipment/materials. Invasive procedures and skin puncturing are **prohibited**.

The Competitive Process

9. The team will have **fifteen (15) minutes to assemble the display**. Parts of the display may be done prior to competition. The time for assembly is to set up what the team has previously created in preparation for their presentation to the judges.
10. The two (2) member team will report back to the display at their assigned appointment time to present a five (5) minute prepared oral presentation to the judges. Note cards are permitted during the oral presentation. The presentation may include but is not limited to why they chose this career/career cluster, what they learned by researching this career/career cluster, what forms of research they used to complete the display, and what they included on the display and why.
11. Costumes and hand-held props are not permitted during the oral presentation.
12. **USE OF DISPLAY DURING PRESENTATION:** Visuals or display items used during the presentation portion of the event may be touched or picked up **BUT MUST** remain contained within the dimensions of the display. **Items removed from the display will be considered outside the dimensions of the display and subject to point deductions.**
13. Each team will be judged on their overall display and how well they documented the career/career cluster information through the display. Each team will also be judged on their ability to communicate information to the judges about the career area. During the five (5) minute prepared presentation, time cards will be shown with one (1) minute remaining and “stop” at the end of the 5 minutes.

14. No equipment/supplies (except tables and display boards for NLC 2014) will be provided for this event. All equipment/supplies needed must be provided by the team. It is the team's responsibility to ensure that all equipment is in working condition.
15. Electricity will not be provided and may not be used. **This includes anything with battery power or an off/on switch.**
16. Competitors in this event at the National Leadership Conference are expected to attend the HOSA Showcase for this event. Team members will stand with their displays and share event experiences with conference delegates. Team members will take their displays at the conclusion of the Showcase.
17. In the event of a tie, a tie breaker will be determined by the areas on the rating sheet section(s) with the highest point value in descending order.

Changes for 2013-14

1. The event title has changed.
2. A presentation display board that was previously recommended is now "required" to create consistency among displays and place more focus on the content of the display.
3. In response to concerns about the cost of transporting displays from states to the site of the HOSA National Leadership Conference (NLC), National HOSA will provide a white presentation display board to teams registered for this event, upon request, to be picked up at HOSA Competitive Events Headquarters on the day of NLC registration. Display boards will NOT be provided at Area/Regional or state HOSA events.
4. The points on the rating sheet have been adjusted to place more emphasis on the oral career presentation (55%).
5. The display should be designed to "stand alone" so that anyone viewing the display would learn about the career/career cluster without having someone there to speak or press any buttons.



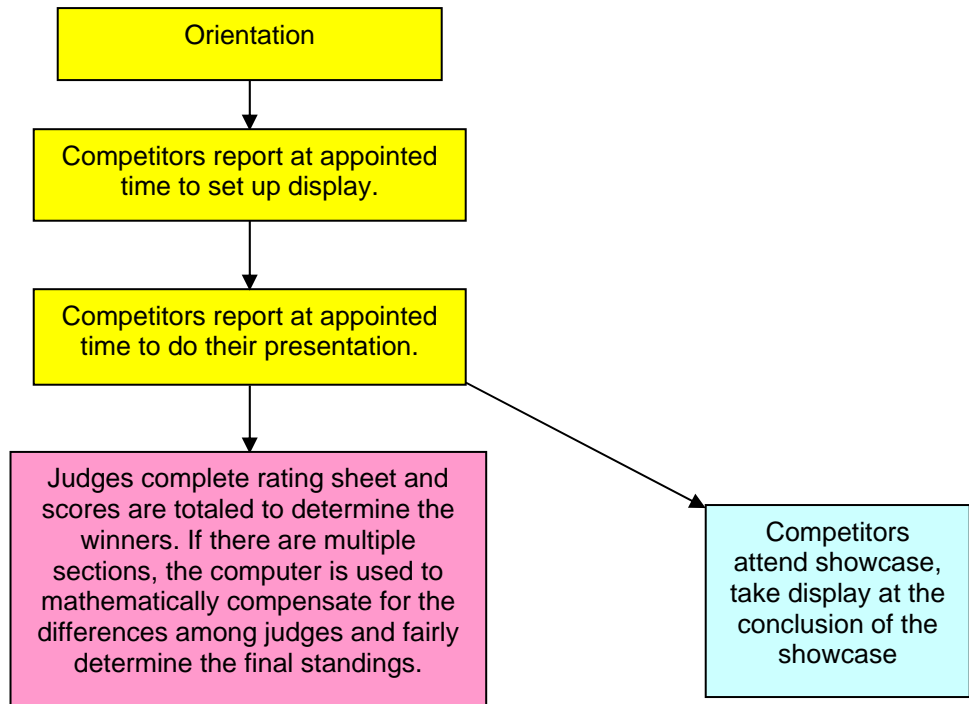
Required Personnel (Per Section):

1. One Event Manager per event
2. One Section Leader per section
3. One Timekeeper per section
4. One-two Judges per section – one should be a health professional.
5. One-two event assistants per section
6. One QA to provide quality assurance for the event by ensuring that the guidelines are followed and all event documents are complete.

Facilities, Equipment and Materials (Per Section):

1. One table per team (6' tables) or two teams per table (8' tables).or banquet rounds, usually placed in one long row per section.
2. Two - three chairs per display or table (for competitors while they are waiting to be judged, and for judges during the competitor presentation.)
3. Calculators, clip board and pencils for judges
4. Event evaluations and pencils for competitors to complete evaluation
5. Tape measure
- *** 6. OPTIONAL: Competitors may bring a plain, white cloth table drape
7. Per section: 1 minute and stop cards
8. Team numbers for tables
- *** 9. Print or electronic copy of the event guidelines for the event orientation (one per team).

Event Flow Chart



HEALTH CAREER DISPLAY JUDGE'S RATING SHEET

Section # _____ Team # _____

Level _____ SS _____ PS/Collegiate

Judge's Signature _____

| Items Evaluated | Points Possible | | | | | Points Allocated |
|---|-----------------|-----------|------|------|------|------------------|
| | Superior | Excellent | Good | Fair | Poor | |
| 1. Oral Presentation | | | | | | |
| Career information presented in a clear and concise manner. | 10 | 8 | 6 | 4 | 2 | |
| Oral presentation demonstrates insight and a deep understanding of the career or career cluster. | 10 | 8 | 6 | 4 | 2 | |
| Team members were able to share stories, examples, and experiences that illustrate the career or career cluster. | 10 | 8 | 6 | 4 | 2 | |
| A variety of methods were used to complete the career research. | 5 | 4 | 3 | 2 | 1 | |
| Voice (volume/grammar) and enthusiasm. | 10 | 8 | 6 | 4 | 2 | |
| Appearance, poise, eye contact, gestures. | 10 | 8 | 6 | 4 | 2 | |
| 2. Display | | | | | | |
| Artistic/design value | 5 | 4 | 3 | 2 | 1 | |
| Creativity and originality | 10 | 8 | 6 | 4 | 2 | |
| Display information was easy to follow, neat, concise and spelled correctly. | 10 | 8 | 6 | 4 | 2 | |
| Display provides an overview with accurate and important information that clearly describes the career/cluster. | 10 | 8 | 6 | 4 | 2 | |
| 3. Display was within listed dimensions <i>All points are awarded for this item if display is within the proper dimensions, and no points if it is not.</i> | 10 | | | | | |
| TOTAL POINTS -- Possible/Awarded | 100 | 72 | 54 | 36 | 18 | |